



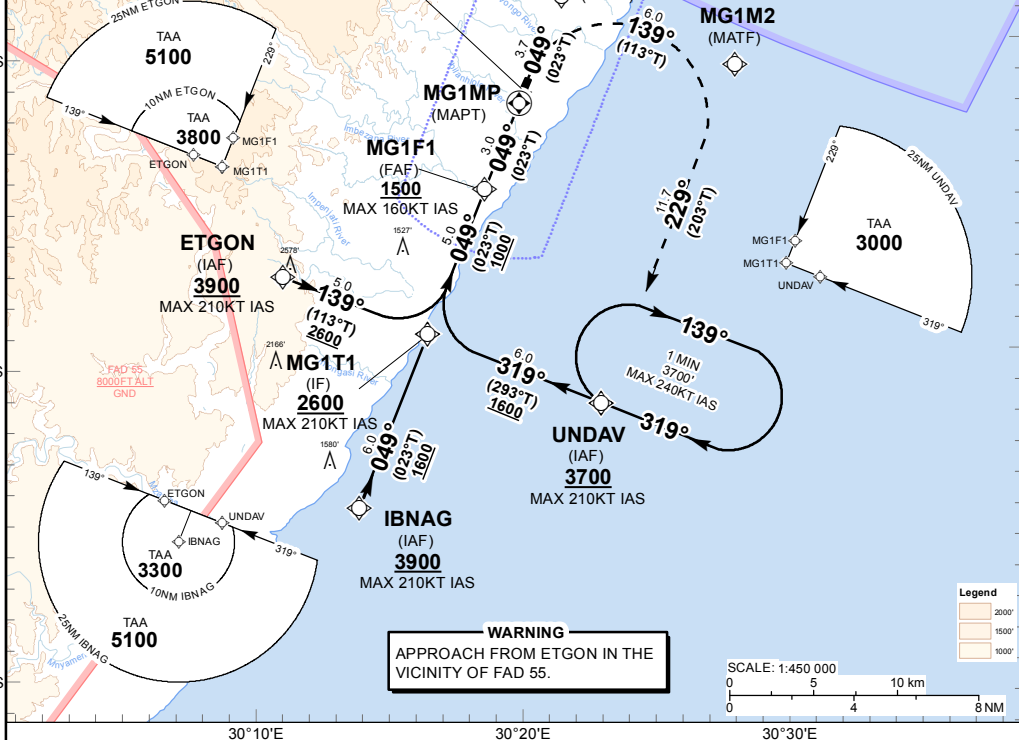
**GNSS REQUIRED**

ELEV, ALT & HGT IN FEET  
 DIST IN NM  
 BRG ARE MAG  
 VAR 26°W (2016)

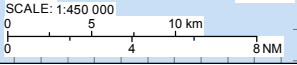
**MARGATE FAFG ARP**  
 30°51'26.52"S  
 030°20'34.90"E

FAMG ATZ  
 2500 FT ALT  
 GND

Durban CTA  
 EL200  
 FL145



**WARNING**  
 APPROACH FROM ETGON IN THE VICINITY OF FAD 55.

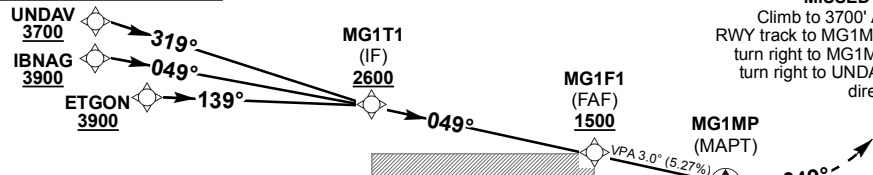


Distance from THR05	3	2	1			
ADVISORY ALT(HGT)	1500 (1012)	1180 (692)	860 (372)			

**TRANSITION ALT 5000**  
**TRANSITION LEVEL ATC**

**INA ALT 5000**

**MISSED APPROACH:**  
 Climb to 3700' ALT. Maintain RWY track to MG1M1. At MG1M1 turn right to MG1M2. At MG1M2 turn right to UNDAV, hold or as directed by ATC.



**RDH 50**

THR ELEV 488  
 NM to/from THR RWY 05

CHANGE: TAA UNDAV BRG

MIN TEMP: 0°C		A	B	C			KT	80	100	120	140	160
Straight-in Approach	LNAV	910 (422)	910 (422)	910 (422)	FAF to MAPT	M:S	2:15	1:48	1:30	1:17	1:08	
	LNAV/VNAV	830 (342)	830 (342)	830 (342)	Rate of descent	FPM	428	534	641	748	855	
Circling		1140 (642)	1310 (812)	1490 (992)	NOTE: 1. CAT A - C. 2. MAPT at THR 05.							